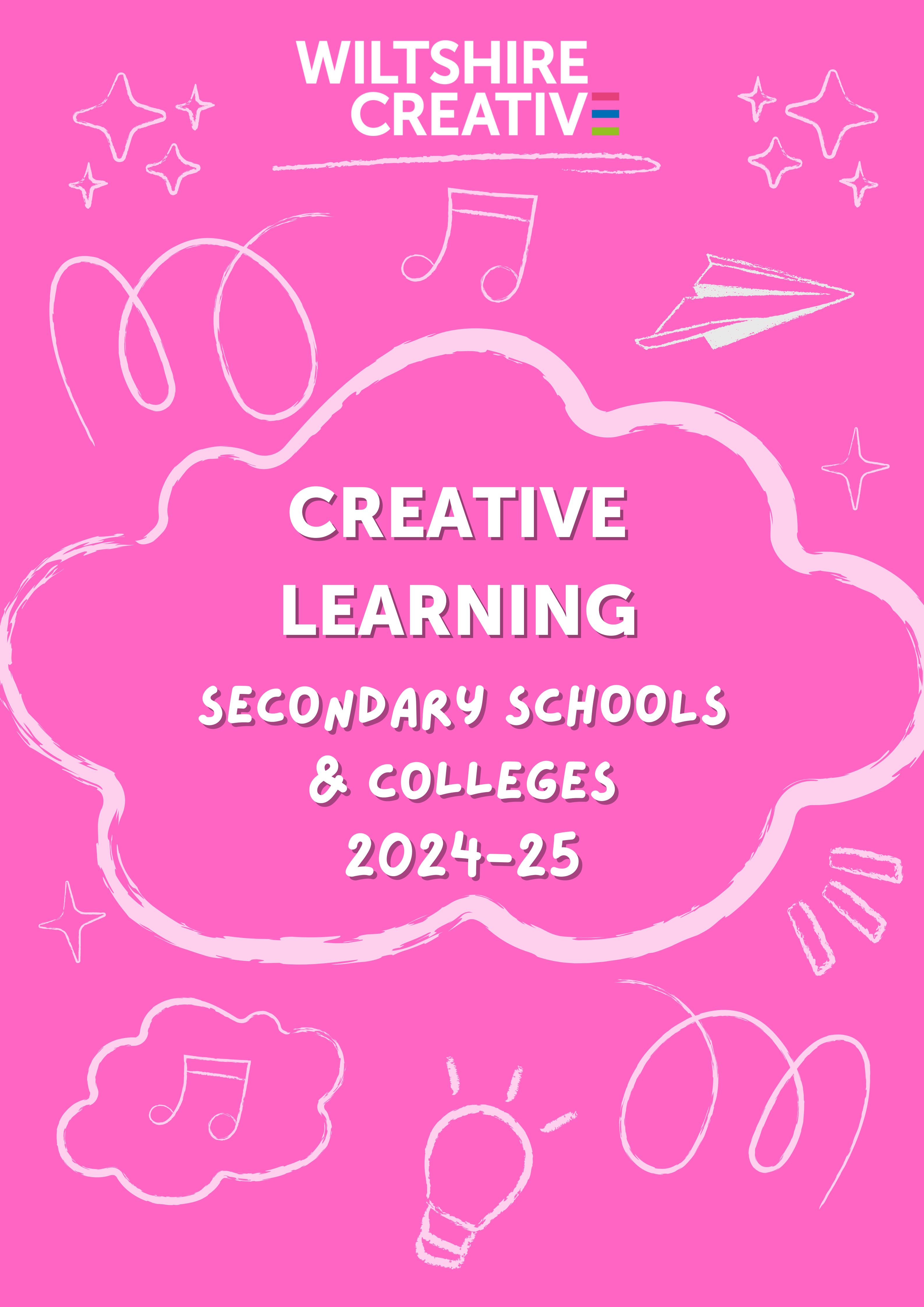


**WILTSHIRE
CREATIVES**

**CREATIVE
LEARNING**

**SECONDARY SCHOOLS
& COLLEGES
2024-25**

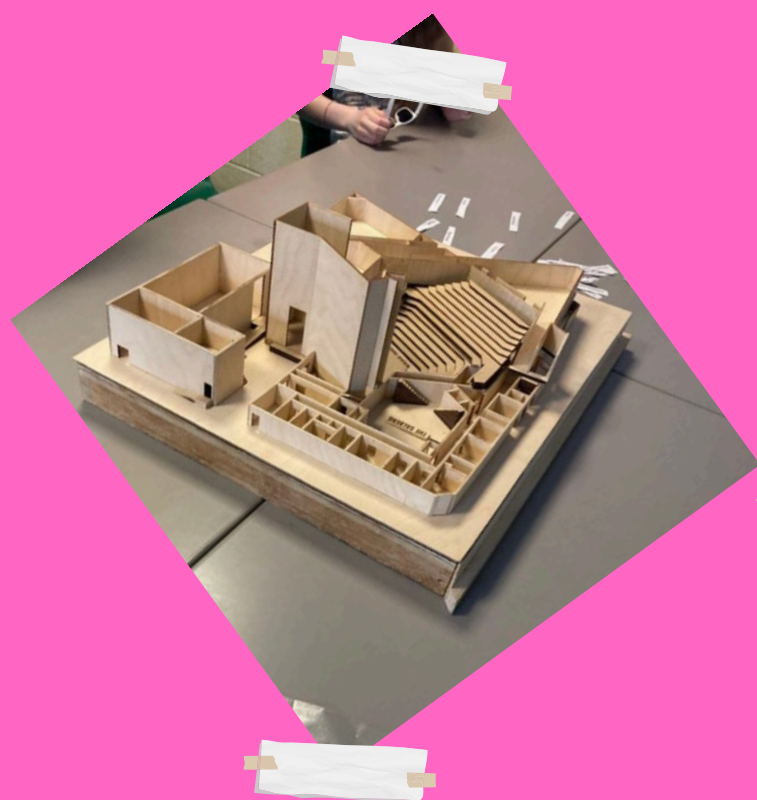
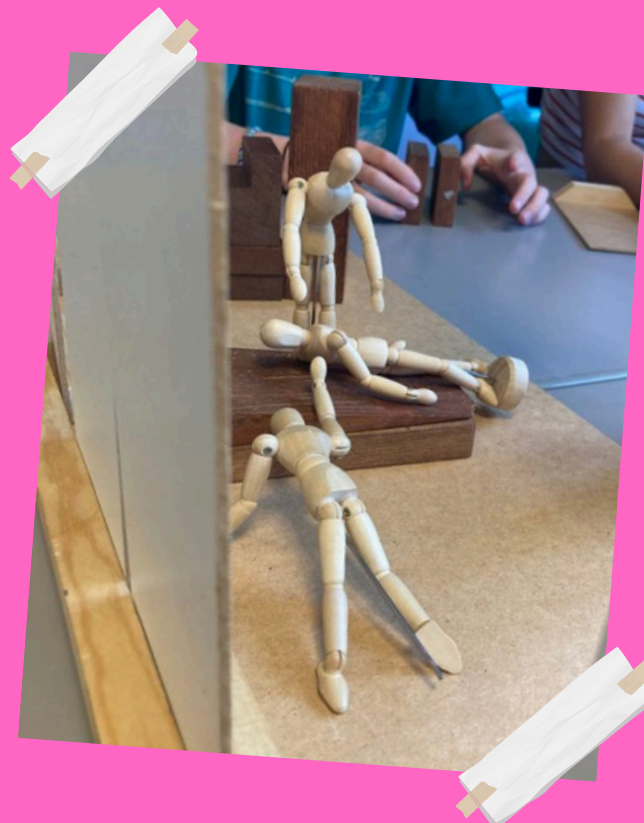




CREATIVE LEARNING

At Wiltshire Creative we provide opportunities for young people to learn through the arts and gain insight into the world of professional performing arts through workshops, visits and creative performance opportunities.

Our specialist practitioners are supportive of delivering sessions within a PRU or SEND setting and our Creative Learning Programme also offers a unique staff CPD experience, as participating teachers observe and collaborate with industry professionals.



CONTACT US:

To book or discuss our Creative Learning programme further, please contact the Take Part Team by email at takepart@wiltshirecreative.co.uk and follow us on Instagram [@youngwiltscreative](https://www.instagram.com/youngwiltscreative)



WORKSHOPS & VISITS

1. INTRODUCTION TO CREATIVE CAREERS WORKSHOP

A 1-hour workshop and Q&A session discovering a world of creative careers. Our take part practitioners will visit your school and bring along tailored resources exploring some of the many career options available within the performing arts industry. Suitable for KS3, 4 & 5

2. BACKSTAGE TOURS AT SALISBURY PLAYHOUSE

Pupils will see the theatre at work, engage with staff, explore the venue and see how a production is developed on and off stage. Suitable for all Key Stages.

3. BESPOKE WORKSHOPS

Tailored workshops designed in collaboration with you. Examples might include:

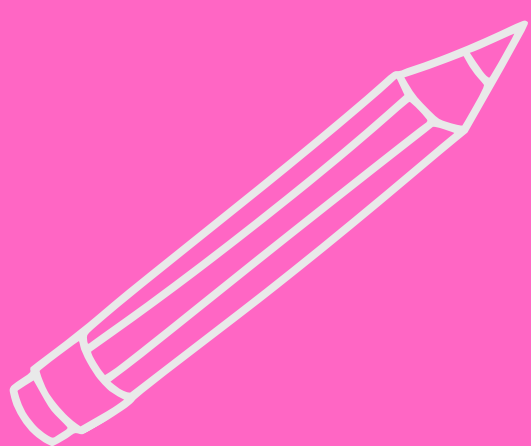
- Sessions exploring studied texts in English or Drama
- Puppetry
- Play reading
- Drama games for building confidence and developing teamwork

Our practitioners can provide a workshop to suit your requirements across creative disciplines including drama, dance, visual arts or music.

PRICING GUIDANCE:

£110 per class per 1 hour session (up to 30 pupils)

Longer sessions quoted individually, please get in touch to discuss your requirements.





EVENTS & OPPORTUNITIES

• CREATIVE CAREERS DAY

MONDAY 28 OCTOBER, 10AM-3PM, £15PP, AGE 13-19

An opportunity for young people in school years 9-13 to find out more about the Performing Arts Industry. Get hands on experience by taking part in practical workshops led by industry professionals and get to grill them about their roles and how they got there! Workshops have previously included lighting and sound, performance, producing, stage management and costume.

If you would like to attend but the ticket cost is a barrier, please contact takepart@wiltshirecreative.co.uk as bursary spaces are available.

• DRAMA SCHOOL AUDITION WORKSHOP

TUESDAY 29 OCTOBER, 10AM-3PM, £5, AGE 17+

Applying to study Drama or performance subjects at University or Drama School? Sign up to this informative training day at Salisbury Playhouse with actor and director, Tom Sherman. Get support with audition speeches, find out what to expect in the application process, ask questions about your applications, or share experiences and advice with other group members.

If you would like to attend but the ticket cost is a barrier, please contact takepart@wiltshirecreative.co.uk as bursary spaces are available.

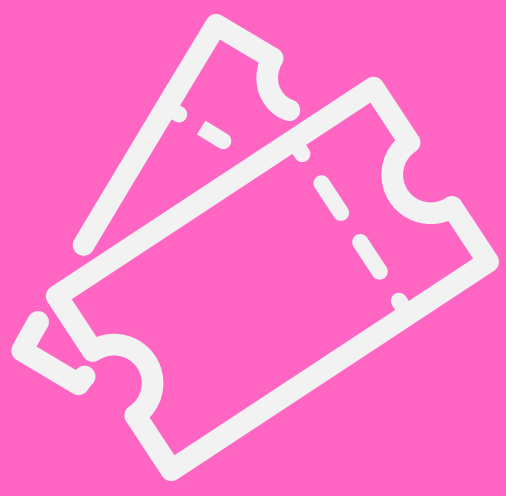
• CREATIVE CAREERS WEEK

JUNE 2025, FREE, AGE 14-19

A week-long work experience for a small group of young people aged 14-19 interested in careers in the arts industry. Work behind the scenes in our venues and learn about the range of artistic, administrative, and technical roles across the organisation. There is also the chance to obtain a Bronze Arts Award.

We will be recruiting from Sept 2024, please see our website for more details.





GROUP BOOKINGS AT SALISBURY PLAYHOUSE



School group discounts are available for performances at Wiltshire Creative - please contact Ticket Sales directly on 01722 320 333 or email ticket-sales@wiltshirecreative.co.uk.

Upcoming shows include:

BIRDSONG

6th Sept - 14th Sept 2024

Sebastian Faulks's epic story of love and loss returns to the stage marking the 30th anniversary of the international best-selling novel. A mesmerising story of love and courage. Set both before and during the Great War. Ages 14+
(Contains themes of war and death)

PLAY ON!

22nd Oct - 2nd Nov 2024

A new jazz musical, based on Shakespeare's Twelfth Night, with music from Duke Ellington. Presented by Talawa's Black Joy season. Ages 12+

SLEEPING BEAUTY

30th November 2024 - 12th Jan 2025

This classic tale will bring the festive spirit to the stage complete with singing and dancing for our annual pantomime! Ages 4+

For more details, visit our website: www.wiltshirecreative.co.uk

ARTS AWARD & ARTSMARK

Enhance your pupils' learning experience by delivering Arts Award with our support. Arts Awards are nationally recognised qualifications for learners at all levels, accredited by Trinity College London. To find out more visit: www.artsaward.org.uk

Participating in our Creative Learning programme also supports your school's Artsmark journey. The Artsmark Award is a creative quality standard for schools and education settings, awarded by Arts Council England. Artsmark supports schools to deliver a high-quality arts and cultural education and provides an excellent way to demonstrate this. To find out more visit www.artsmark.org.uk.

