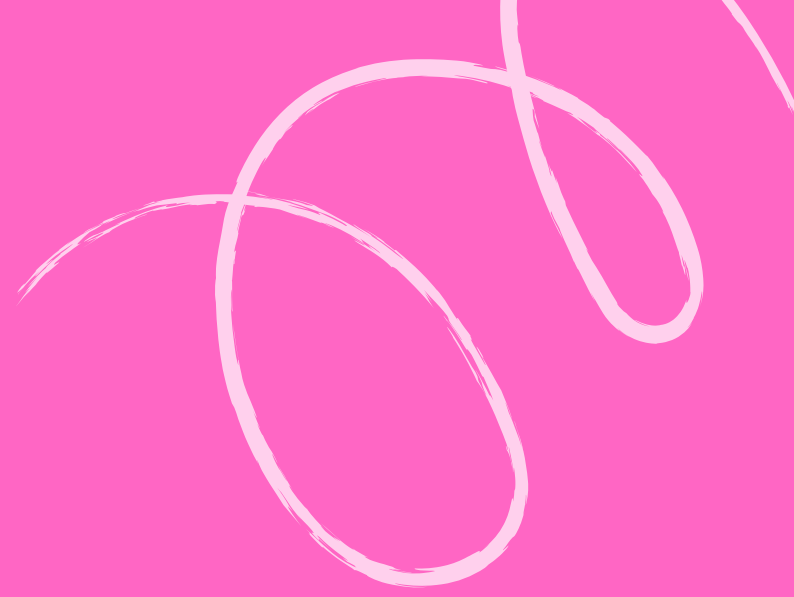


**WILTSHIRE
CREATIV**



**CREATIVE
LEARNING**

**PRIMARY SCHOOLS
2024-25**



BEGINNERS PLEASE!

Beginners Please! is our flagship primary school performing arts project for Key Stages 1 and 2. Participants gain an insight into the world of professional performing arts through workshops, visits and creative performance opportunities.

Mix and match sessions to suit your budget, timetable, and school diary. Workshops are delivered at a time to suit the school and our practitioner. They are offered on a first come, first served basis.

Work with us to deliver curriculum, creative skills and social development, in a package that is tailored to suit your school's needs. Our practitioners are supportive of delivering sessions within a PRU or SEND setting. Beginners Please! also offers a unique teacher CPD experience for participating schools, as staff observe and collaborate with industry professionals.

PRICES:

Workshops & Tours: £110 per class per 1 hour session (up to 30 pupils)

Dress Rehearsals & Performances: £165 per class per session (up to 30 pupils)

Longer sessions quoted individually, please get in touch to discuss your requirements.



SESSIONS:

1. WHAT IS A THEATRE?

Pupils will be introduced to Salisbury Playhouse using a scale model of the building and learn about the various departments within the theatre. They will handle examples of props and costumes as well as testing some professional fake blood!

2. CAREERS OFF-STAGE

Learn about jobs off-stage through practical activities with industry professionals. Workshops can include costume, set design, marketing and developing sound effects for a script.

3. BACKSTAGE TOUR AT SALISBURY PLAYHOUSE

A perfect follow up to 'What is a Theatre?'. Pupils will see the theatre at work, engage with staff, explore the venue and see how a production is developed behind the scenes.

4. CREATIVE PERFORMANCE WORKSHOP

A practical workshop developing performance skills. Workshops can be based on a specific curriculum area, theme or story. Previous workshops have included historical topics, drama games and Shakespeare. We can deliver workshops in drama, dance, visual arts or music at your school or at one of our venues.





5. PERFORMANCE PREPARATION WORKSHOP

These sessions help develop your special Beginners Please! performance to be performed at Salisbury Playhouse. We visit your setting to help you get performance-ready through a practical rehearsal session.

6. TECHNICAL AND DRESS REHEARSALS (JULY 2025)

Rehearsals in The Salberg (our studio theatre) at Salisbury Playhouse, where we add sound and lighting in preparation for your performance. This session is essential for any group who is performing at our venue as it builds confidence in your young people before they perform to an audience.

7. FINAL PERFORMANCES AT SALISBURY PLAYHOUSE (JULY 2025)

Perform to friends and family on stage in The Salberg at Salisbury Playhouse! Show a short performance developed in your earlier Creative Performance Workshop, Technical and Dress Rehearsal.

BESPOKE WORKSHOPS:

If you have a particular creative workshop in mind, please contact us to discuss your needs. We can facilitate themed sessions in a range of art-forms including performance, music, visual arts and dance. You may wish to tie in with a curriculum area or special event such as Book Week.

CONTACT US:

*To book or discuss our Creative Learning programme further,
please contact the Take Part Team by email at takepart@wiltshirecreative.co.uk
and follow us on Instagram [@youngwiltscreative](https://www.instagram.com/youngwiltscreative)*



OTHER OPPORTUNITIES



GROUP BOOKINGS AT SALISBURY PLAYHOUSE

School and Youth Group discounts are available for performances at Wiltshire Creative. Please contact Ticket Sales directly on 01722 320 333 or email ticketsales@wiltshirecreative.co.uk.

Upcoming productions include:

AGATHA CHRISTIE'S THE MOUSE TRAP

1st July - 6th July 2024

The world's longest-running play. This thrilling West End production is the genre-defining murder mystery from the best-selling novelist of all time. Ages 7+

SLEEPING BEAUTY

30th November 2024 - 12th Jan 2025

This classic tale will bring the festive spirit to the stage complete with singing and dancing for our annual pantomime! Ages 4+

For more details, visit our website: www.wiltshirecreative.co.uk

ARTS AWARD AND ARTSMARK

Enhance the Beginners Please! learning experience by delivering Arts Award with our support. Arts Awards are nationally recognised qualifications for learners at all levels, accredited by Trinity College London: www.artsaward.org.uk

Taking part in Beginners Please! also supports your school's Artsmark journey. The Artsmark Award is a creative quality standard for schools and education settings, awarded by Arts Council England. Artsmark supports schools to deliver a high-quality arts and cultural education and provides an excellent way to demonstrate this: www.artsmark.org.uk